

It's time for

# CARTOON CLUB!

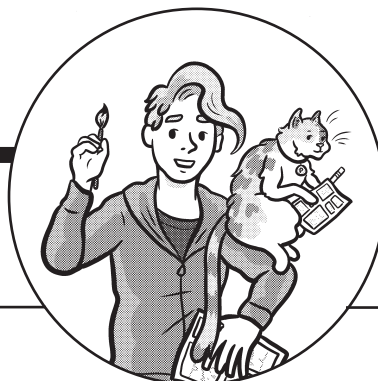
WRITING and DRAWING LESSONS



---

by Kane Lynch  
and P-NUT the Cat

---



---

Make comics!  
and then even more comics!

---

# The Schulz Library CREATURE!

A CARTOON CLUB  
ADVENTURE!

LOOKS LIKE ONE OF  
THE CREATURES IN HERE  
IS LOOSE IN THE LIBRARY!



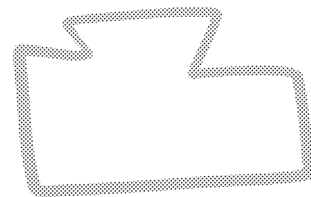
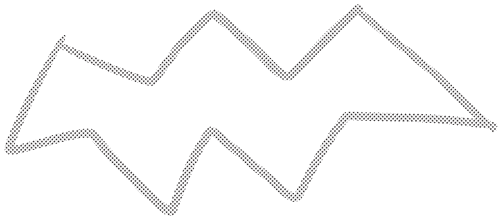
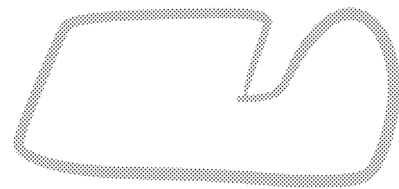
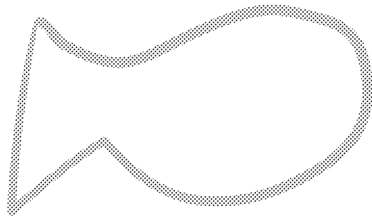
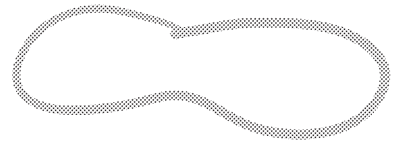
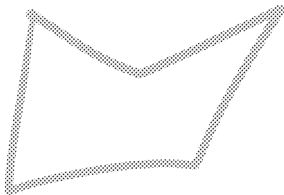
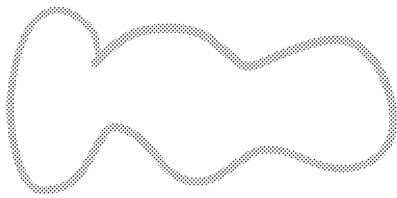
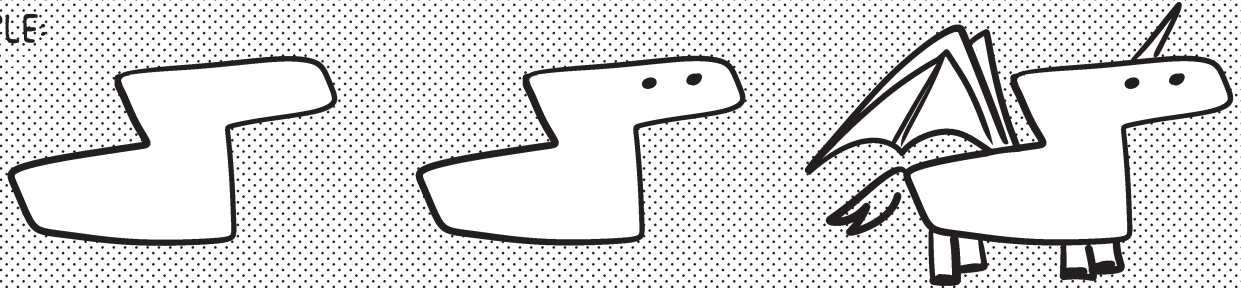
BUT THE  
DRAWINGS  
ARE TOO BLURRY  
TO FIGURE OUT  
WHAT WE'RE  
LOOKING FOR!



## HELP OUR CREW IDENTIFY THE BEASTIE!

DRAW AN EYEBALL AND OTHER FEATURES ON THE SHAPES  
TO "RESTORE" THE FADED CREATURE DRAWINGS!

EXAMPLE:



WHICH ONE OF THESE CREATURES CAN YOU IMAGINE LIVING IN THE LIBRARY?  
HOW DO YOU THINK IT GOT THERE? WHAT DOES IT WANT?  
DRAW A COMIC THAT TELLS THE TALE!



# LET'S TELL A STORY!

DRAW A CHARACTER IN THE  
FIRST PANEL TO GET STARTED!  
DON'T WORRY ABOUT DRAWING FANCY--  
STICK FIGURES WORK JUST FINE!

THE  
BEGINNING!



THIS IS \_\_\_\_\_

I WANT \_\_\_\_\_!

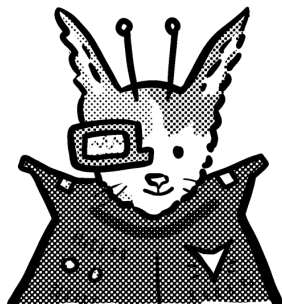
BUT THERE'S A PROBLEM!



BUT \_\_\_\_\_ HAS A PLAN!

BUT IT DOESN'T WORK!

**THE  
END**



IT'S TIME FOR A NEW SOLUTION!

DOES IT WORK???

THE END?

WORKSHEET BY KANE LYNCH

YOUR NAME: \_\_\_\_\_