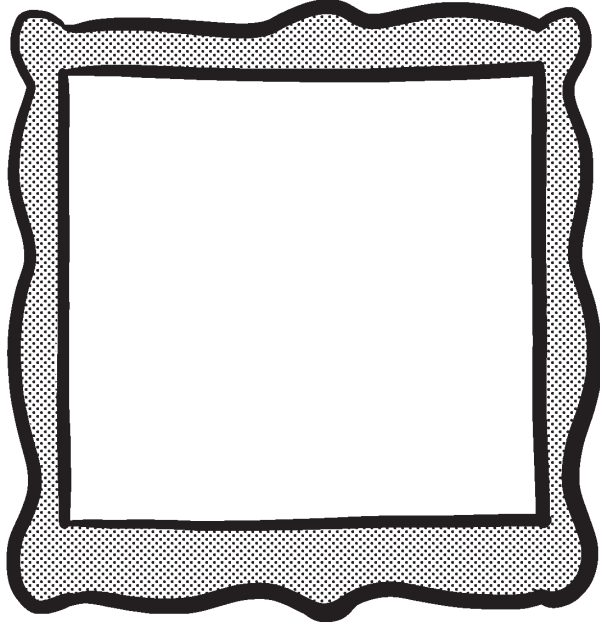


NAME _____

**DRAW YOUR
CHARACTER'S
FACE!**

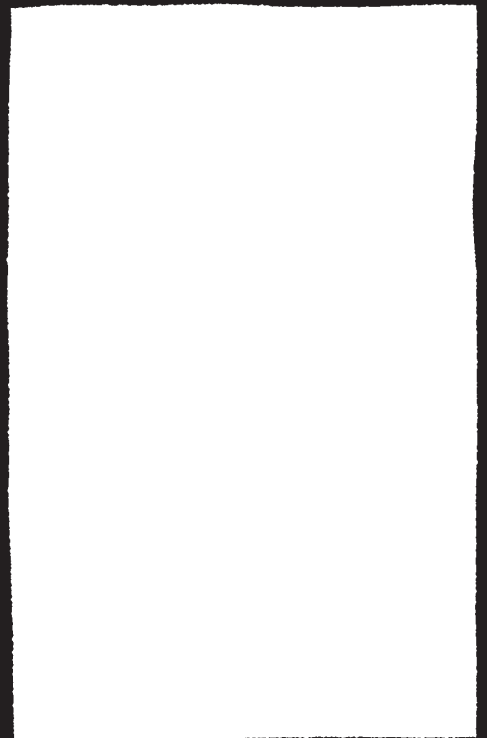


ARE THEY BEAUTIFUL OR
UNUSUAL OR FRIENDLY.
OR SCARY?

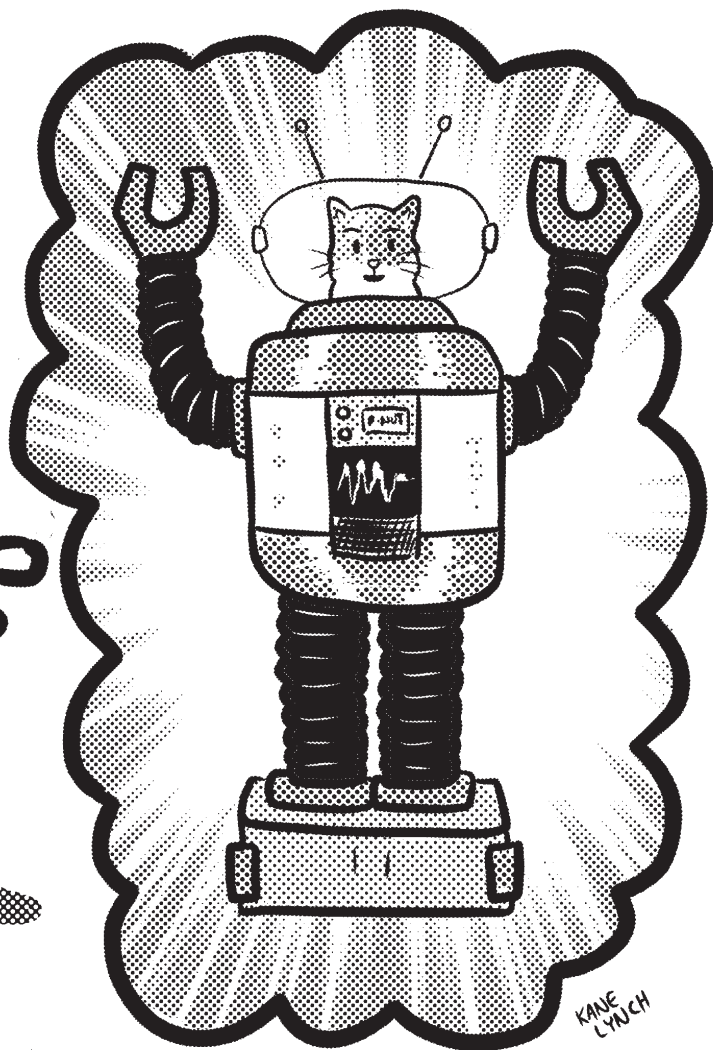
DO THEY LOOK LIKE
A REAL PERSON?

DRAW THEIR WHOLE BODY!

ARE THEY THIN OR WIDE? SHORT OR TALL?
WHAT DO THEIR CLOTHES TELL US ABOUT THEM?
ARE THEY A FARMER OR A DETECTIVE OR
EVEN THE PRESIDENT?



CHARACTER MOTIVATION



WHAT DOES YOUR CHARACTER WANT MORE THAN ANYTHING?

WHAT ARE THEY AFRAID OF?

WHO DO THEY LOVE?

WHO DO THEY HATE?

WHAT DO THEY DO WHEN THEY'RE BORED?

NOW DRAW A
SETTING!

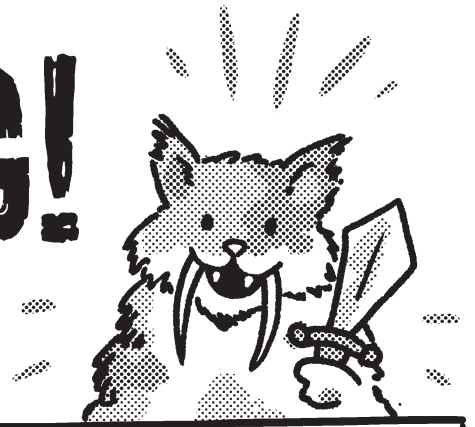
NAME _____



KANE
LYNCH

IS THIS WHERE YOUR CHARACTER IS USUALLY FOUND, OR IS IT SOMEWHERE UNEXPECTED?
WHAT SIMPLE DETAILS CAN YOU PUT IN TO MAKE YOUR SIMPLE SETTING RECOGNIZABLE?

THE BEGINNING!



THIS IS _____

THIS IS WHERE WE FIND THEM . . .

_____ WANTED ONE
THING MORE THAN ANYTHING ELSE!

I WANT

_____!

BUT THERE WAS A PROBLEM!



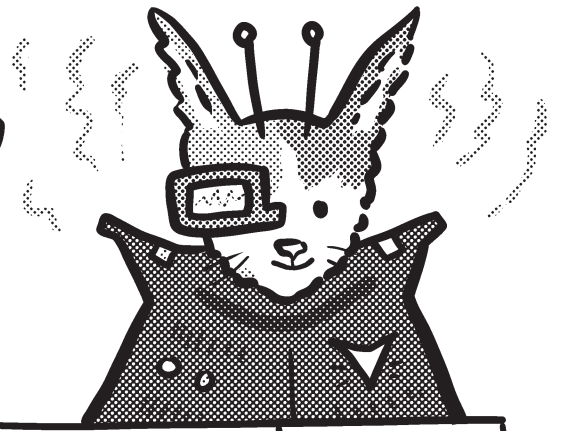
BUT _____ HAS A PLAN!

THEY GET READY . . .

AND THEY TRY IT!

BUT THE PROBLEM GETS WORSE!

THE END



IT'S TIME FOR A NEW SOLUTION!

WILL IT WORK???

THE END?

COMPOSITION!

A.K.A.
"MAKING IT
LOOK COOL"

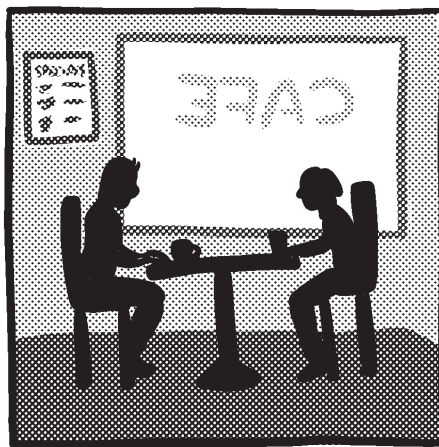


TAKE A LOOK
AT THE PANELS
BELOW.

HOW DO THE
COMPOSITIONS WE USE
CHANGE THE FEEL OF
THE STORY?



ESTABLISHING SHOT



WIDE SHOT



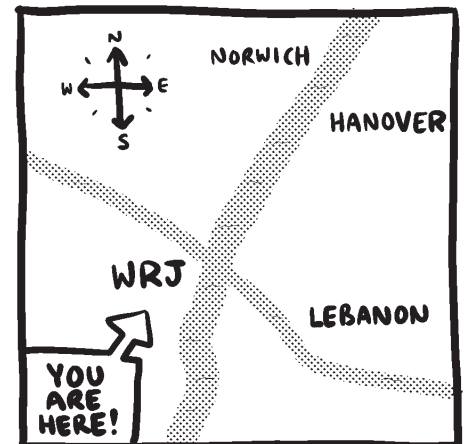
TWO SHOT



OVER THE SHOULDER



CLOSE-UP



DIAGRAM/CHART/MAP

THINK OF WHERE THESE MORE DRAMATIC COMPOSITONS
COULD FIT INTO THE NEXT DRAFT OF YOUR COMIC!
TRY MIXING AND MATCHING A FEW DIFFERENT ONES!

THE MAGIC OF TIMING!



PICK A PANEL FROM
YOUR LAST 3 COMICS
AND EXPAND IT INTO
FOUR PANELS OF ACTION!

WHAT OTHER DETAILS
CAN YOU SHOW?

DOES ADDING THESE
DETAILS IMPROVE
YOUR STORY?
